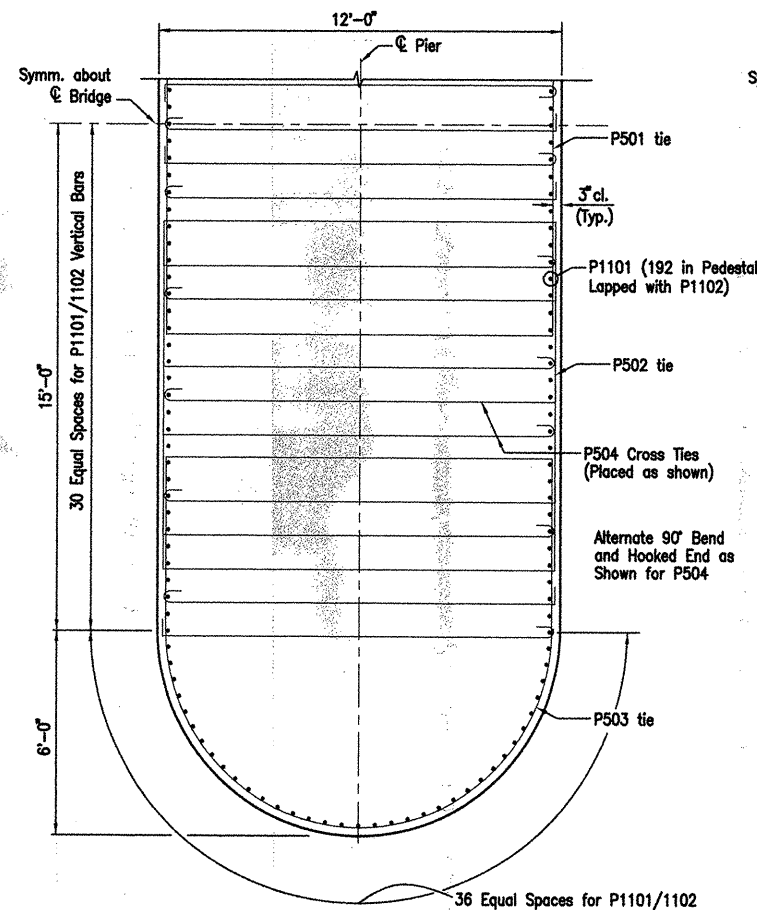


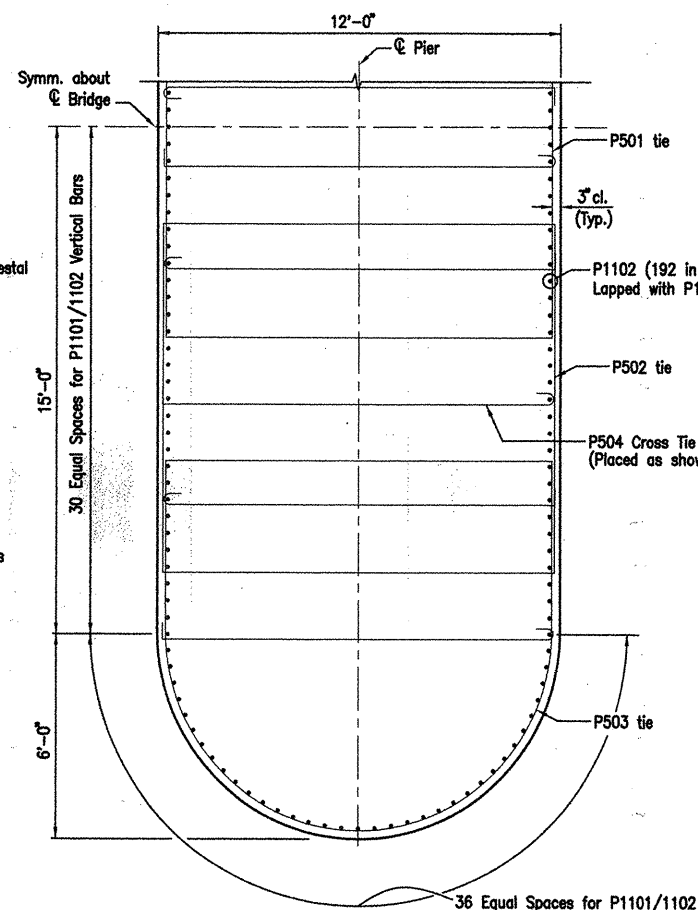
ACAD SCALE: 3/16" = 1'-0"

COMPANY\1999 JOBS\99-044 AHTD\WHITERIVER\JOB 110394\2main\pierat1&2

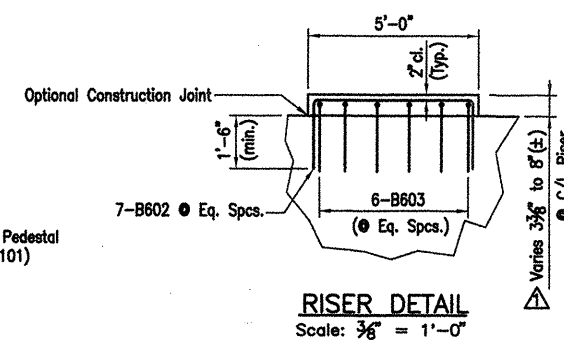
DATE REVISED	DATE FILMED	DATE REVISED	DATE FILMED	FED. ROAD NO.	STATE	FED. AID PROJ. NO.	SHEET NO.	TOTAL SHEETS
6-3-2010					ARK.			
9-25-2012								
				JOB NO.	110394		65	196
				06830	PIERS		41977	



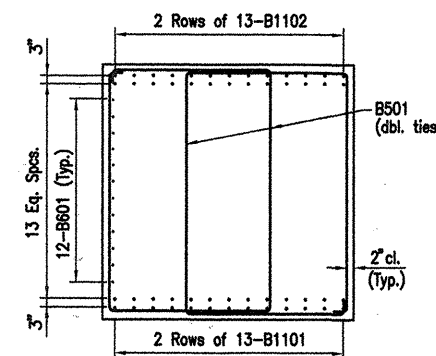
SECTION X-X
N.T.S.



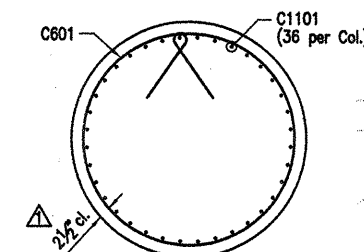
SECTION Y-Y
N.T.S.



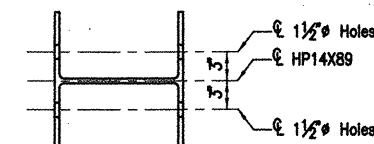
The riser reinforcing steel shall be placed with the bent cap reinforcing steel. The Contractor has the option to drill and grout the riser reinforcing steel at least 1'-6" into the cap using an approved non-shrink grout or an epoxy grout listed in the QPL. Diameter of holes and installation procedure shall be as recommended by the grout manufacturer. Place bent reinforcing properly to avoid damage. This work shall be paid under "Reinforcing Steel - Bridge".



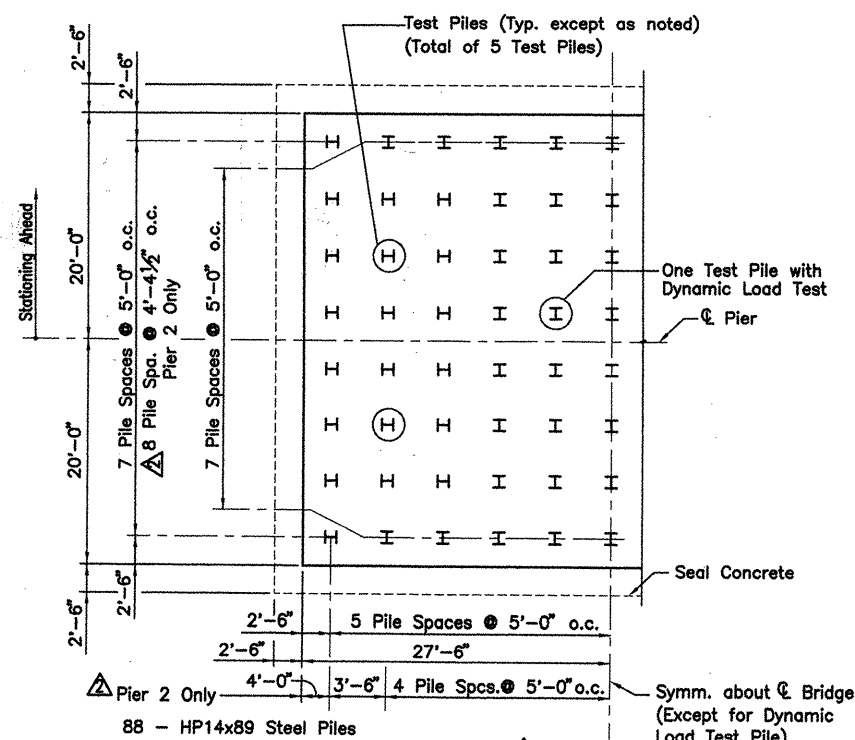
SECTION B-B
Scale: 3/8" = 1'-0"



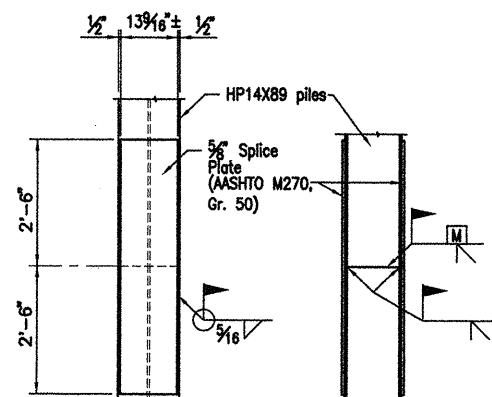
SECTION Z-Z
Scale: 3/8" = 1'-0"



SECTION H-H
N.T.S.

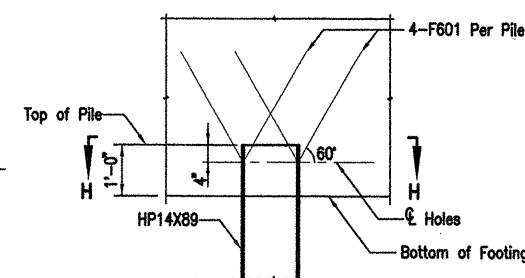


FOOTING PLAN
Scale: 1/8" = 1'-0"



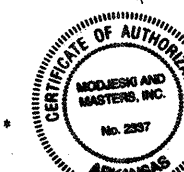
PILE SPICE DETAIL
N.T.S.

Note: The Contractor may for his convenience and at his expense provide as many as three splices per pile for steel bearing piling. Minimum spacing between splices shall be 5'-0".



DETAIL AT PILE TOP
N.T.S.

* - Tie or wedge this reinforcing to bear at top of holes



For Locations of Sections B-B, X-X, Y-Y and Z-Z, see Dwg. 41976.
 Revised Pier 2 Pile Layout By HJE/MM 9-25-2012
 Revised Rebar Cover, Riser Ht. By AHTD, MM, HJE 6-3-2010 Checked MM

ALTERNATE NO. 1 & 2

(SHEET 2 OF 3)
 DETAILS OF PIERS 1, 2 AND 3

WHITE RIVER STR. & APPRS.
 (CLARENDON) (PH II) (F)
 MONROE COUNTY

ROUTE 79 SEC. 13
 STATE HIGHWAY COMMISSION
 LITTLE ROCK, ARK.

Engstrom/Modjeski and Masters, Inc.

DRAWN BY: FS DATE: Apr. 10
 CHECKED BY: JES DATE: Nov. 07
 DESIGNED BY: FS DATE: Nov. 01
 BRIDGE NO. 06830 DRAWING NO. 41977